

Data use subject to license.

© DeLorme. Topo North America™ 9.

www.delorme.com

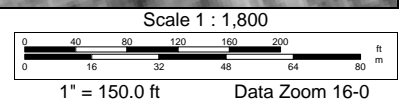




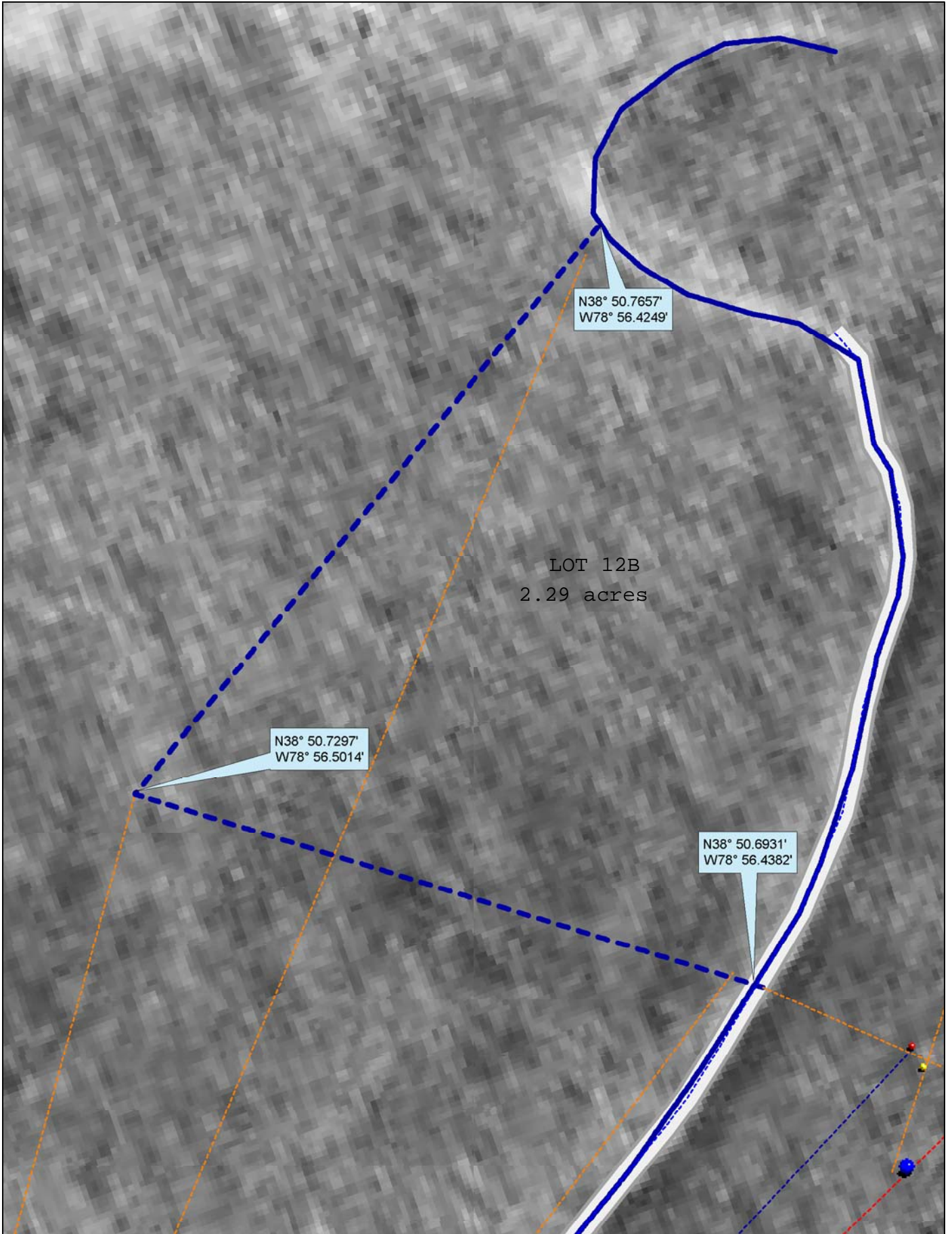
Image USDA Farm Service Agency

Google earth

Google earth

miles
km



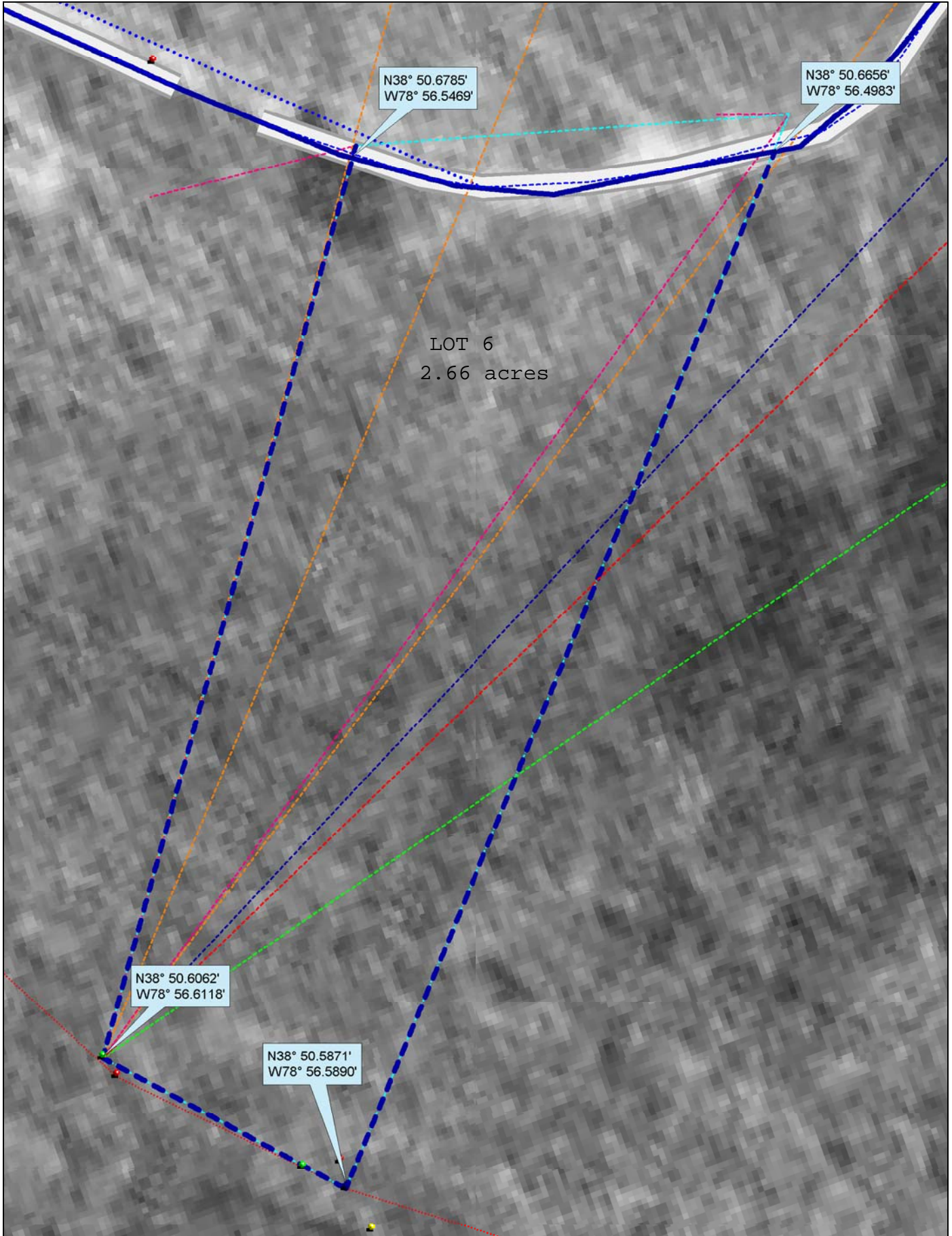


Data use subject to license.

© DeLorme. Topo North America™ 9.

www.delorme.com





LOT 6
2.66 acres

N38° 50.6785'
W78° 56.5469'

N38° 50.6656'
W78° 56.4983'

N38° 50.6062'
W78° 56.6118'

N38° 50.5871'
W78° 56.5890'

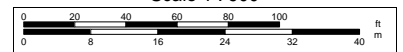
Data use subject to license.

© DeLorme. Topo North America™ 9.

www.delorme.com

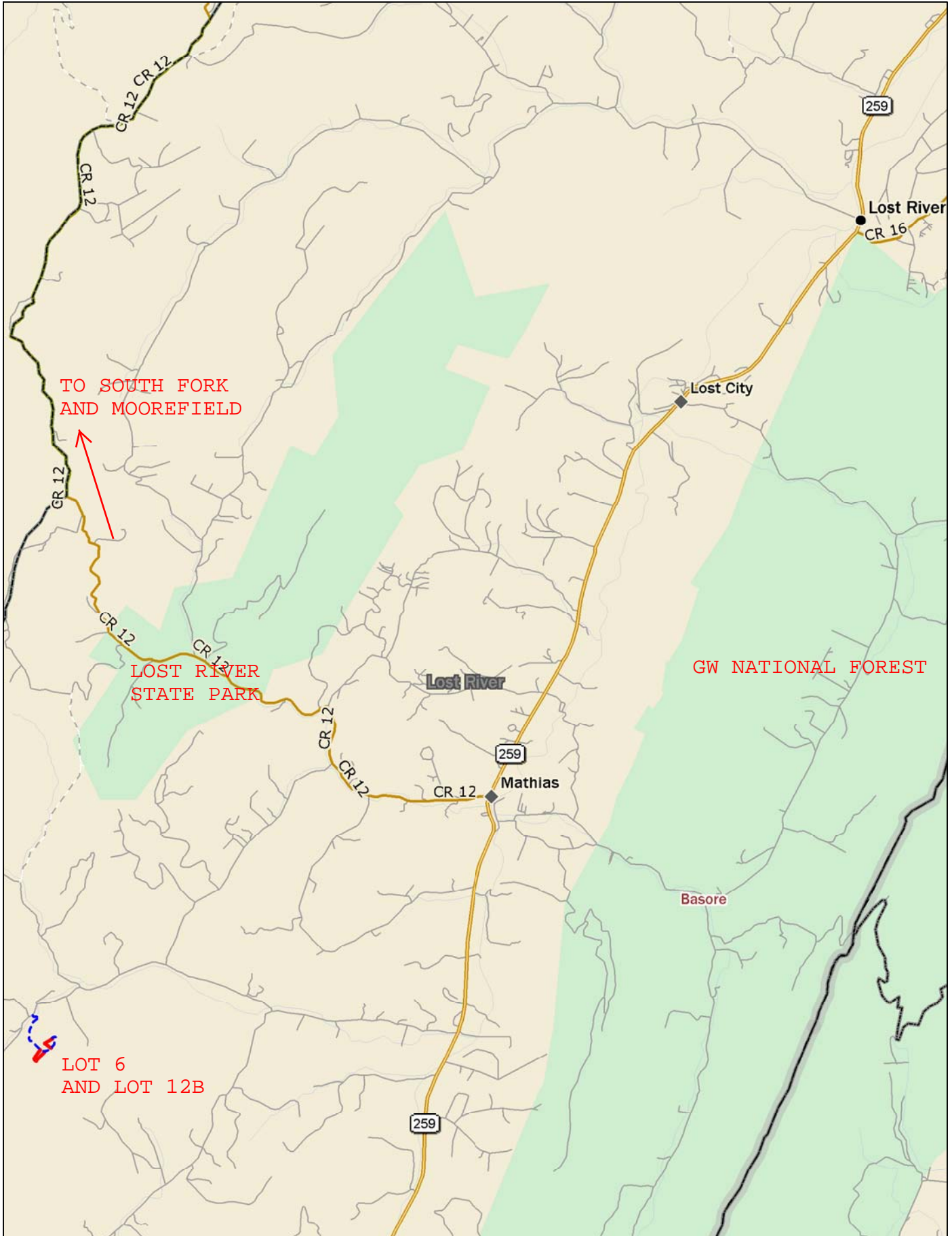


Scale 1 : 900



1" = 75.0 ft

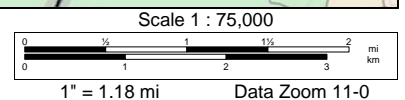
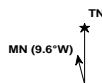
Data Zoom 17-0

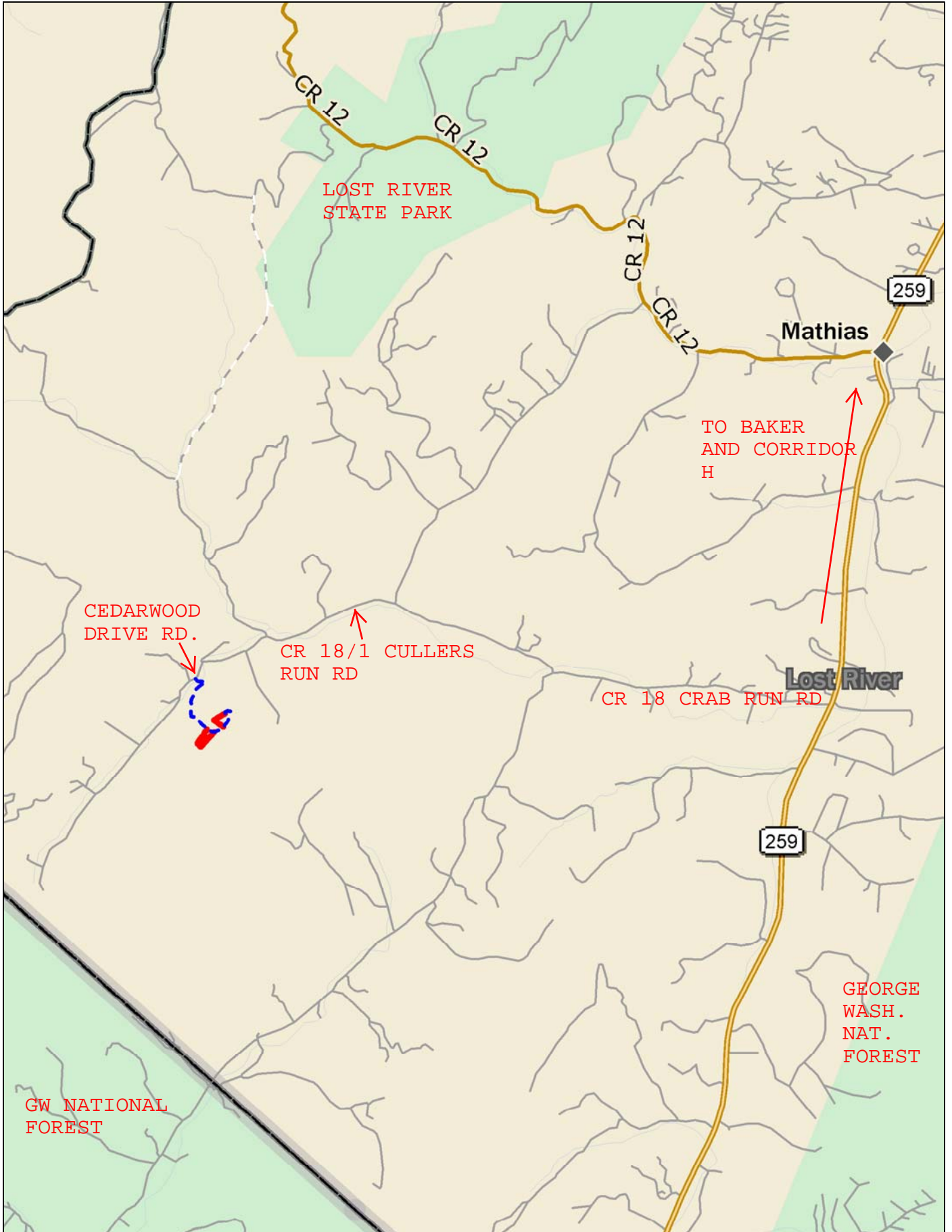


Data use subject to license.

© DeLorme. DeLorme Street Atlas USA® 2009.

www.delorme.com

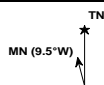




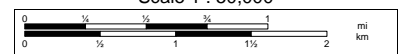
Data use subject to license.

© DeLorme. DeLorme Street Atlas USA® 2009.

www.delorme.com

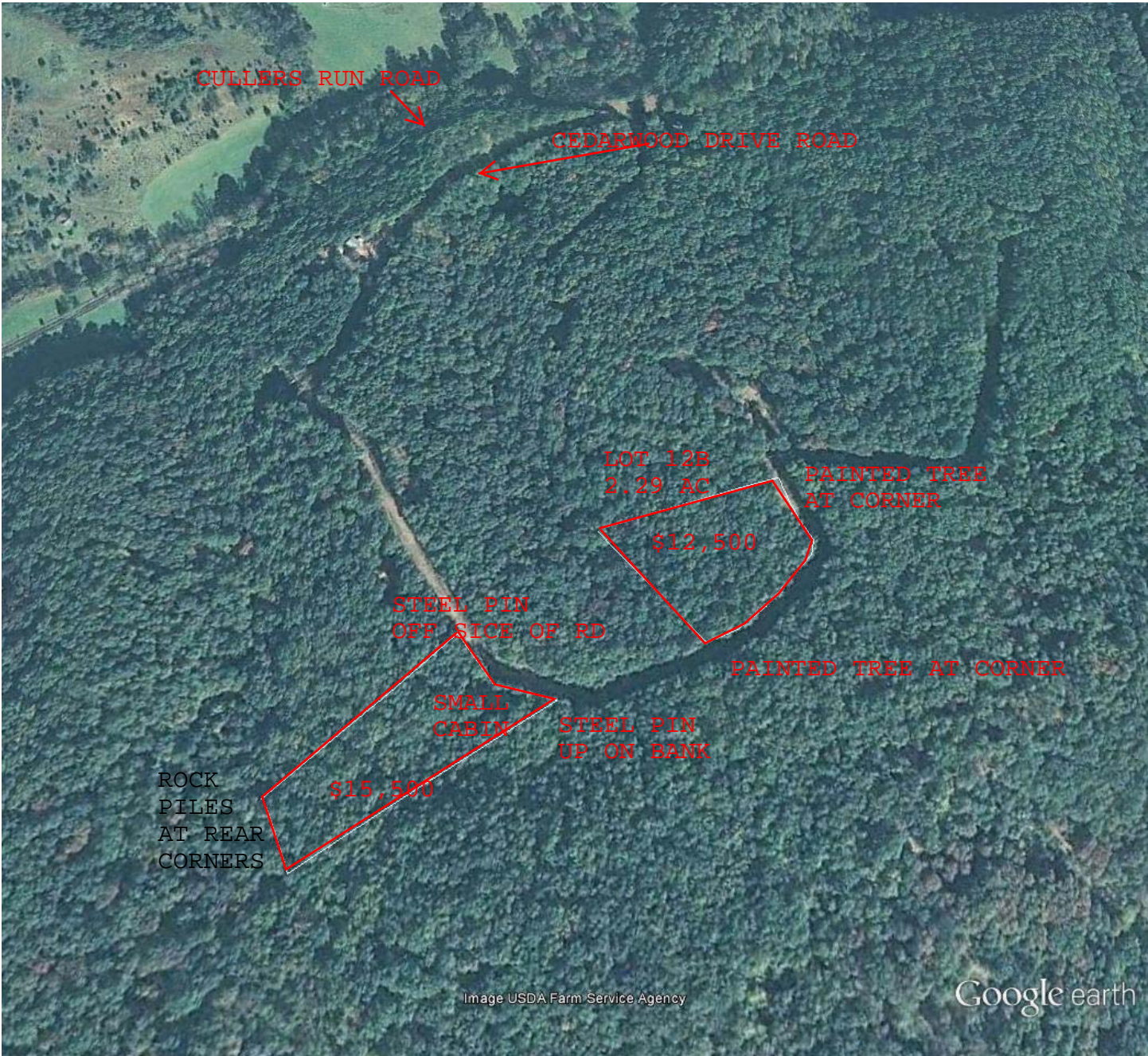


Scale 1 : 50,000



1" = 4,166.7 ft

Data Zoom 11-0



CULLERS RUN ROAD

CEDERWOOD DRIVE ROAD

LOT 128
2.29 AC

PAINTED TREE
AT CORNER

\$12,500

STEEL PIN
OFF SIDE OF RD

PAINTED TREE AT CORNER

SMALL
CABIN

STEEL PIN
UP ON BANK

ROCK
PILES
AT REAR
CORNERS

\$15,500


Image USDA Farm Service Agency

Google earth

Google earth

feet
meters



A photograph of a wooded area. In the center, a blue tarp is draped over a pile of sticks and branches. The ground is covered with fallen brown leaves. The background consists of many thin, vertical tree trunks. The overall scene is a natural, outdoor setting.

LOT 12B

LOT 20



A photograph of a forest floor covered in fallen brown leaves and tree trunks. The scene is a dense woodland with many thin, vertical tree trunks. The ground is a thick carpet of dry, brown leaves, with some fallen branches and twigs scattered throughout. The lighting is soft and diffused, typical of an overcast day in a forest. The overall color palette is dominated by browns and greys.

LOT 6



LOT 6